

# MOMENTUM

A Monthly Publication Produced by OFMQ  
*Oklahoma's trusted resource for improving your EHR & Health IT Experience*



# WORLD HEALTH DAY

7 APRIL



## OUR PLANET, OUR HEALTH

April 7th has been designated World Health Day by the World Health Organization and also marks the anniversary of WHO, which was founded in 1948.

Each year draws attention to a specific health topic of concern to people all over the world. This year - **Our Planet, Our Health!**

[WHO](#) estimates that more than 13 million deaths around the world each year are due to avoidable environmental causes.

Over 90% of people breathe unhealthy air resulting from burning of fossil fuels.

A heating world is seeing mosquitos spread diseases farther and faster than ever before.

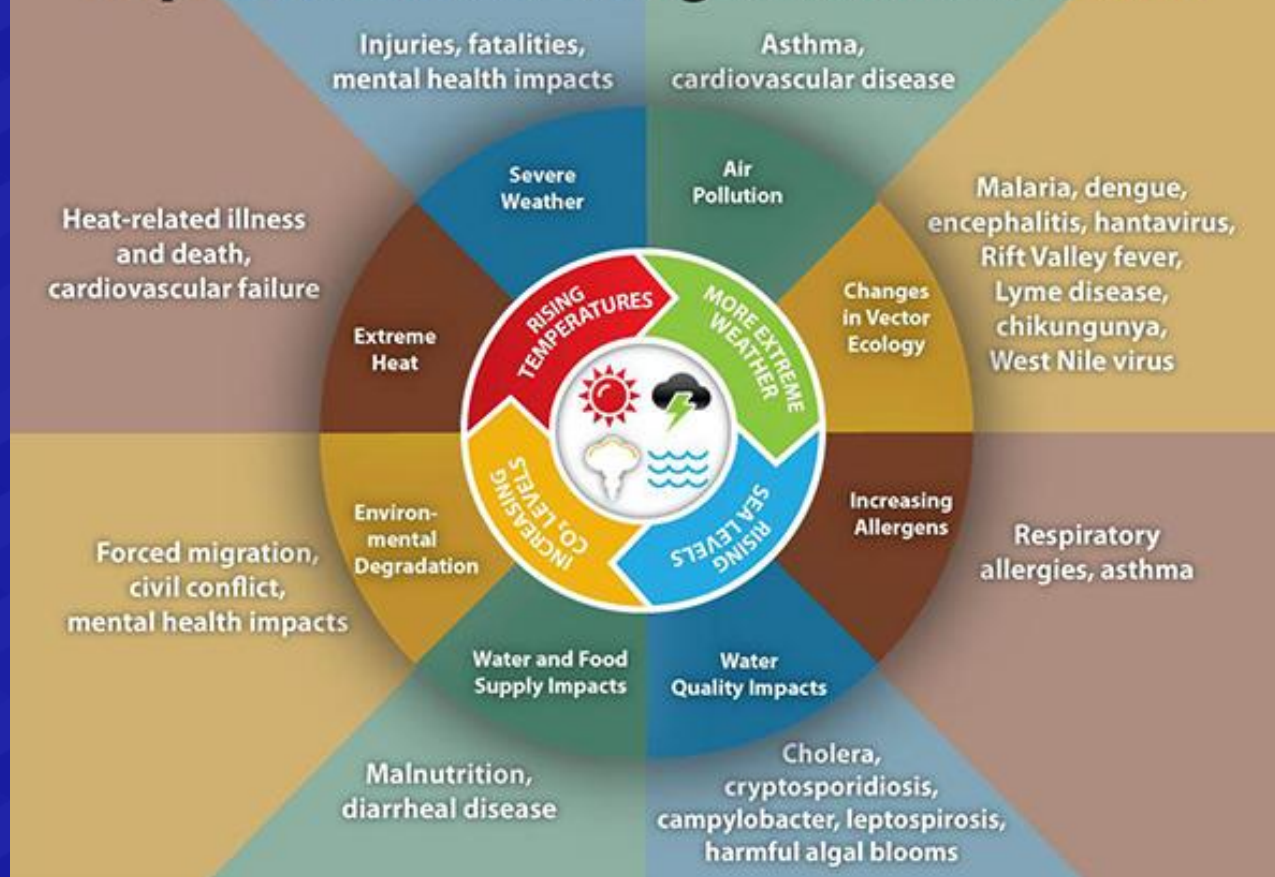
Extreme weather events, land degradation and water scarcity are displacing people and affecting their health.



Systems that produce highly processed, unhealthy foods and beverages are driving a wave of obesity, increasing cancer and heart disease while generating a third of global greenhouse gas emissions.

Pollution and plastics are found at the bottom of our deepest oceans, the highest mountains, and have made their way into our food chain.

# Impact of Climate Change on Human Health



For more information on how the climate effects health, visit the [CDC](https://www.cdc.gov) website.



## Learn More About Sustainable Health Care!

### Practice Green Health

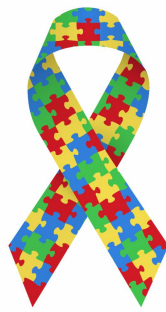
- An organization that provides sustainability solutions that benefit patients and the environment.

### Health Care Without Harm

- An organization that works to transform health care worldwide so that it reduces its environmental footprint.



April is *Autism Acceptance Month!*  
#CelebrateDifferences



## What do we know about Autism?

- Autism Spectrum Disorder is different for everyone and affects people to varying degrees.
- Clinicians use DSM-5 to diagnose Autism by consistent differences in communication, interpersonal relationships, and social interactions.
- Signs and symptoms include differences in behaviors within four categories: communication, social behavior, stereotyped behavior, and other behavior. Refer to the [CDC](#) for a detailed list of signs and symptoms.
- There is no single known cause, but it is generally accepted that it is caused by a difference in brain structure and function. Researchers continue to study irregular segments of genetic code to potentially identify one gene that causes Autism.
- For more information, visit the [Autism Society](#) website.



## April HIT List:

- HHS Secretary Becerra Presents the President's HHS Budget for [FY2023](#)
- Four HIPAA Enforcement Actions Hold Healthcare Providers Accountable With [Compliance](#)
- Reminder: 2022 Call for MIPS Promoting Interoperability Measures and Improvement Activities is Open - Check the [Resource Library](#) for more information
- HHS' Office for Civil Rights Seeks Public Comment on Recognized Security Practices and Sharing Civil Money Penalties and Monetary Settlements Under the [HITECH Act](#)





I love the smell of

POSSIBILITY

IN THE MORNING



Have Questions or Need Assistance?



Contact Us Today!  
[OFMQHIT@ofmq.com](mailto:OFMQHIT@ofmq.com)  
405-840-2891

