

MOMENTUM

A Monthly Publication Produced by OFMQ
Oklahoma's trusted resource for improving your EHR & Health IT Experience



Societal Factors That Influence Health: A Framework for Hospitals

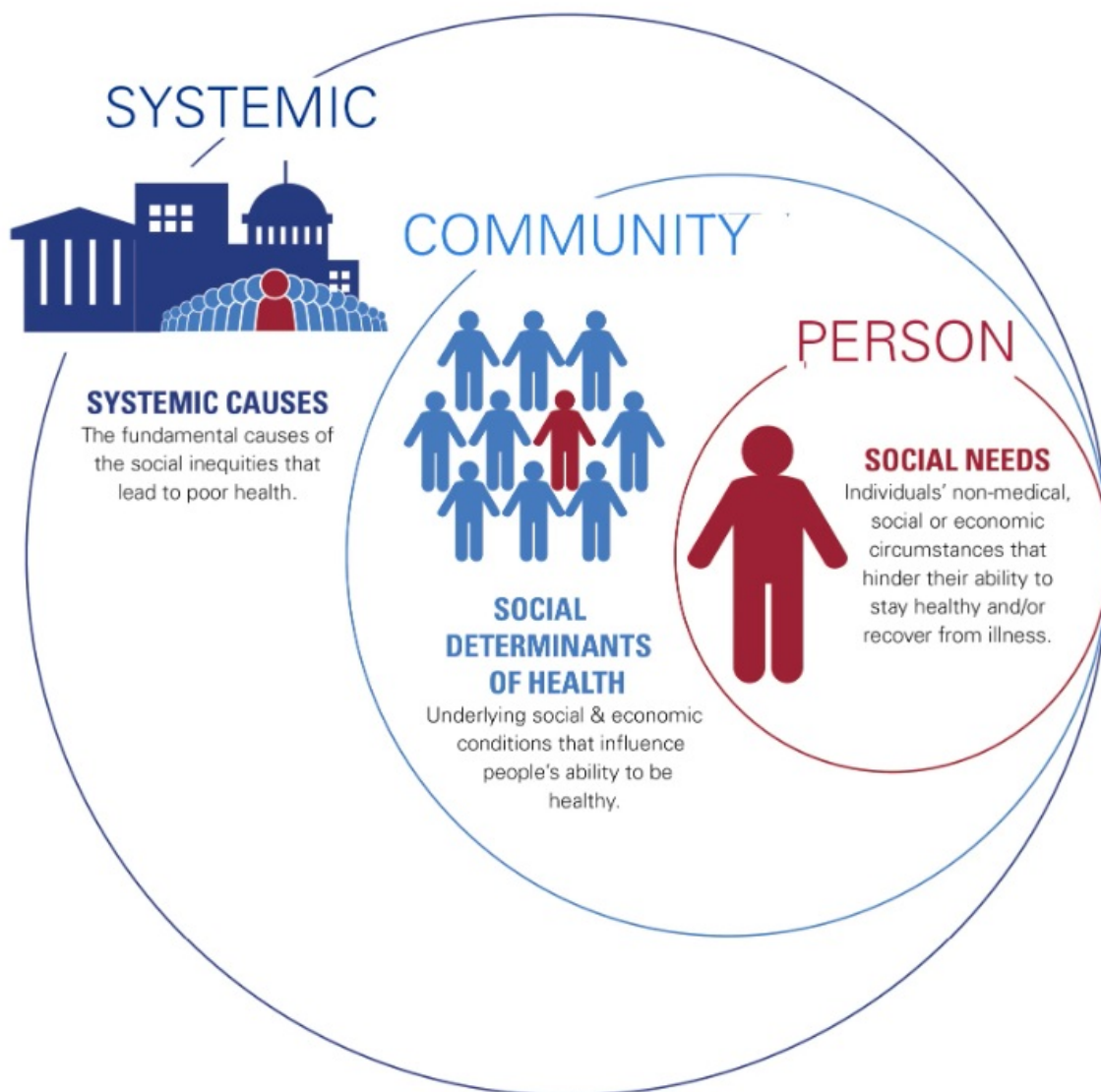


**American Hospital
Association™**

Advancing Health in America

As community cornerstones, hospitals recognize that to improve health equity, we must address the societal factors that influence the health of patients and communities.

The AHA's [Societal Factors that Influence Health Framework](#) is designed to guide hospitals' strategies to address the social needs of their patients, social determinants of health in their communities and the systemic causes that lead to health inequities so the entire field can have meaningful conversations around these issues.



Helpful Coding Resources for Social Determinants of Health

[Using Z Codes Infographic](#)

[SDoH Coding Guidance](#)

OKShine

SB1369 mandates HIE participation for all providers by July 1, 2023.



KEY PROVISIONS INCLUDE:

- Policy applies to individuals and organizations licensed by the State of Oklahoma and/or organizations who employ or contract with such licensed individuals to provide services associated with their licenses to residents of Oklahoma. Such individuals and organizations will be known as and referred to as “providers” in the OHCA HIE policy.
- By July 1, 2023, providers must establish a direct connection to MyHealth and submit health information/data in the form and format defined by the State Office of Coordinator for HIE.
- By July 1, 2023, providers must begin utilizing MyHealth Provider Portal to access health information. Utilization reports will be produced by SDE, MyHealth, and must be submitted to the State.
- Utilization metrics and benchmarks will be determined annually and published three (3) months prior to the commencement of each fiscal year.
- There will be penalties for non-compliance with amounts to be determined.
- Extensions due to financial hardship, size, or technological capability will be considered. Must provide detailed justification as to the hardship and plan to remediate or address it.

[OKShine Website and Sign-Up](#)

Men's Health Month



MEN'S HEALTH MONTH

*Better Health Through
Better Understanding*

minorityhealth.hhs.gov/mens-health



Join us and the HHS Office of Minority Health in advancing health equity for racial and ethnic minority boys and men during Men's Health Month and beyond. Learn how we can achieve [Better Health Through Better Understanding!](#)

#MHM2023

What's the SCOPE-OK?

Ardmore Environmental Camp

During the month of May, the [SCOPE team](#) stayed busy at the Ardmore Environmental Camp with the middle school students of Ardmore Public Schools. *The SCOPE team had the opportunity to teach almost 200 students materials from the Botvin LifeSkills prescription drug abuse and vaping modules.*



Our project lead, Diana Flood, created a name for the students while at the camp - The Wise OWLs, which stood for 'Observe, Weigh, and Lead.' Staying on theme, Diana engaged students with a camp chant - "Hoot hoot!" When in class or driving around after hours, Diana would roll down her window and shout, "Can I get a hoot hoot?!" In which the students cheered back emphatically - "HOOT HOOT!"



The SCOPE-OK/Botvin class quickly picked up steam throughout the camp - students were chatting about the class before even arriving! We were able to engage the students not only through the Botvin curriculum but also through drug-impairment goggles.

Come join the staff at OU HSC and become a part of Oklahoma's premier research university which leads the state in education and career opportunities. OU HSC is one of only four comprehensive academic health centers in the nation with seven professional colleges. We are currently building world-class institutes for the treatment of diabetes and cancer.

[Apply Here!](#)

Dietitian

The Dietitian will contribute to nutrition related programming and collaborates with other program staff to create efficient and accurate nutrition education for the ONIE Project that aligns with the project brand and audience psychographics. In addition, is responsible for educational program development, delivery, and evaluation, as well as implementing and managing community-based health projects involving community partners and stakeholders. ONIE is committed to providing employees with educational and professional experience, significant responsibility that expands with experience, and a congenial team atmosphere.

[Apply Here!](#)

June HIT List

- C2C (Coverage to Care) [Partner Toolkit](#)
- C2C (Coverage to Care) [Community Resources](#)
- U.S. Department of Health and Human Services - Webinar (*1.5 CEUs*) on Addressing [Sexual Assault Against People with Disabilities](#)
- 2023 MIPS Value Pathway (MVP) Registration is [Open](#)





Have Questions or Need Assistance?



Contact Us Today!
OFMQHIT@ofmq.com
405-840-2891

May Photo Credit: Southern Plains Photography

[Southern Plains Photography Website](#)

Oklahoma Foundation for Medical Quality | 515 Central Park Dr, Suite 101, Oklahoma City, OK
73105-1724

[Unsubscribe online@ofmq.com](mailto:Unsubscribe@ofmq.com)

[Update Profile](#) | [Constant Contact Data
Notice](#)

Sent by ofmqhit@ofmq.com powered by



Try email marketing for free today!