



# MOMENTUM

**A Monthly Publication Produced by OFMQ**

*Oklahoma's trusted resource for improving your EHR & Health IT Experience*



# AUGUST

---



## Rural Health



### CMS Proposes Rule to Advance Health Equity, Improve Access to Care, and Promote Competition and Transparency

CMS is proposing actions to advance health equity and improve access to care in rural communities by establishing policies for Rural Emergency Hospitals (REH) and providing for payment for certain behavioral health services furnished via communications technology.

“Improving transparency of our health care system can help support people with Medicare get the high-quality, whole-person care they need,” said Dr. Meena Seshamani, Deputy Administrator and Director for CMS’ Center for Medicare. “With this proposed rule, we are taking important steps forward to ensure that CMS is doing our part to make sure we have a competitive American health care system that works for all people with Medicare.”

The proposed rule includes the following proposals:

- **Establishing Payment Policies for Rural Emergency Hospitals to Improve Access to Care in Rural Communities**
- **OPPS Payment for Remote Behavioral Health Services**
- **Payment Adjustments for Additional Costs of Domestic NIOSH-Approved N95 Surgical Respirators**
- **Request for Information on Competition**

#### Fact Sheets:

[CY 2023 OPPS/ASC Payment System](#)

[Rural Emergency Hospitals](#)



## OKLAHOMA State Department of Health

Over the last two decades, many states have seen a steady rise in obesity rates, including Oklahoma. Across the nation, 31.9% of the adult population are considered obese compared to **36.4% of adults in Oklahoma, which equates to approximately one million adults in our state's population having obesity.**

While personal responsibility will always be a component of weight management, the plan aims to **identify environmental changes which will make it easier for all Oklahomans to choose to be healthier, and to encourage healthy habits and behaviors.** This plan also aims to put resources and education in the hands of Oklahomans so the decisions they make can be well informed, but also supported by the environment in which they live.

"The increased obesity rate is alarming for Oklahomans as individuals and as a state for a number of reasons," said Khan. "Obesity can increase the likelihood of other chronic conditions such as heart disease, high blood pressure, diabetes, high cholesterol, stroke and some types of cancer. At the state level, **a higher prevalence of obesity and other related conditions leads to an increase in medical spending exceeding \$1 billion a year.**"

[Find the State Obesity Plan Here](#)



## CMS Proposes Physician Payment Rule to Expand Access to High-Quality Care

CMS has issued the Calendar Year 2023 Physician Fee Schedule (PFS) proposed rule, which would significantly expand the following items, particularly in rural and underserved areas:

- **Access to Behavioral Health Services**
- **Accountable Care Organizations (ACOs)**
- **Cancer Screenings**
- **Dental Care**

These proposed changes play a key role in the Biden-Harris Administration's Unity Agenda — especially its priorities to tackle our nation's mental health crisis, beat the overdose and opioid epidemic, and end cancer as we know it through the Cancer Moonshot — and ensure CMS continues to deliver on its goals of advancing health equity, driving high-quality, whole-person care, and ensuring the sustainability of the Medicare program for future generations.

"At CMS, we are constantly striving to expand access to high quality, comprehensive health care for people served by the Medicare program," said CMS Administrator Chiquita Brooks-LaSure. "Today's proposals expand access to vital medical services like behavioral health care, dental care, and cancer treatment options, all while promoting access, innovation, and

cost savings in the Medicare program.”

“Integrated coordinated, whole-person care — which addresses physical health, behavioral health, and social determinants of health — is crucial for people with Medicare, especially those with complex needs,” said Dr. Meena Seshamani, CMS Deputy Administrator and Director of the Center for Medicare. “If finalized, the proposals in this rule will advance equity, lead to better care, support healthier populations, and drive smarter spending of the Medicare dollar.”

The proposed CY 2023 PFS conversion factor is \$33.08, a decrease of \$1.53 to the CY 2022 PFS conversion factor of \$34.61.

#### More Information:

[PFS Fact Sheet](#)

[Quality Payment Program Fact Sheet](#)

[Medicare Shared Savings Program Proposals Fact Sheet](#)

---

### HHS Office for Civil Rights in Action



---

## Oklahoma State University - Center for Health Services Pays \$875,000 to Settle Hacking Breach

Oklahoma State University – **Center for Health Sciences (OSU-CHS) has paid \$875,000** to the Office for Civil Rights (OCR) at the U.S. Department of Health and Human Services (HHS) and agreed to implement a corrective action plan to settle potential violations of the Health Insurance Portability and Accountability Act (HIPAA) Privacy, Security, and Breach Notification Rules. OSU-CHS is a public land-grant research university which provides preventive, rehabilitative, and diagnostic care in Oklahoma.

On January 5, 2018, OSU-CHS filed a breach report **stating that an unauthorized third party gained access to a web server that contained electronic protected health information (ePHI)**. The hacker installed malware that resulted in the disclosure of the ePHI of 279,865 individuals, including their names, Medicaid numbers, healthcare provider names, dates of service, dates of birth, addresses, and treatment information. OSU-CHS initially reported that the breach occurred on November 7, 2017, but later reported that the ePHI was first impermissibly disclosed on March 9, 2016.

OCR’s investigation found potential violations of the HIPAA Rules including impermissible uses and disclosures of PHI; failure to conduct an accurate and thorough risk analysis; failure to perform an evaluation, failures to implement audit controls, security incident response and reporting, and failure to provide timely breach notification to affected individuals and HHS.

“HIPAA covered entities are vulnerable to cyber-attackers if they fail to understand where ePHI is stored in their information systems,” said OCR Director Lisa J. Pino. “Effective cybersecurity starts with an accurate and thorough risk analysis and implementing all of the Security Rule requirements.”

In addition to the monetary settlement, OSU-CHS will undertake a robust corrective action plan that includes two years of monitoring. A copy of the resolution agreement and corrective action plan may be found [here](#).

---



**OKLAHOMA**  
State Department  
of Health



Prevent and manage diabetes, heart disease, and stroke

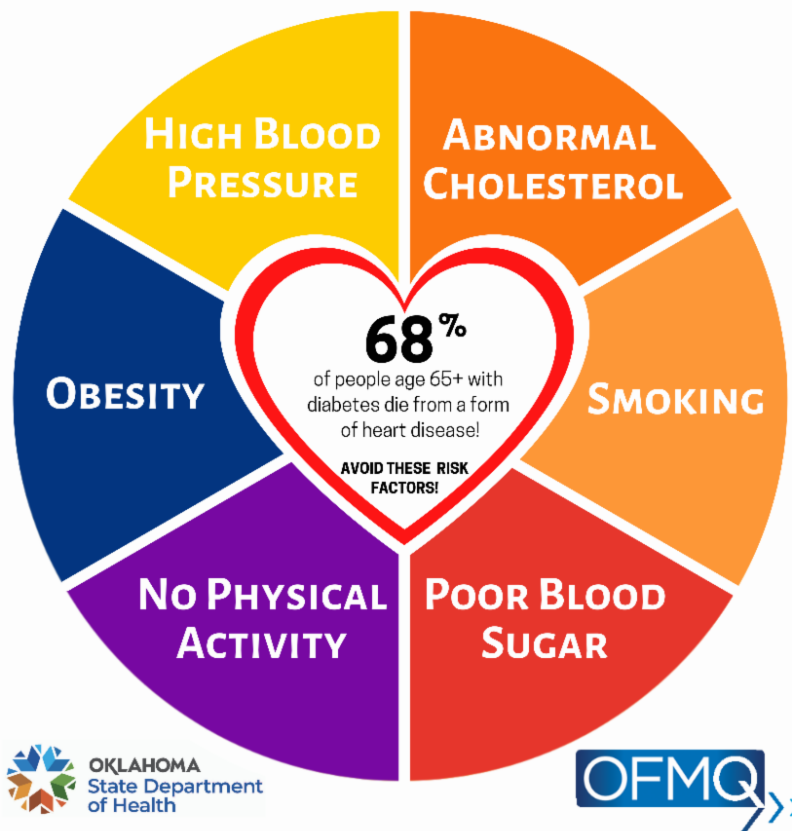
5-year grant providing technical assistance  
to prevent and manage  
diabetes, heart disease, and stroke

In collaboration with the Oklahoma  
State Department of Health and the  
Centers for Disease Control and  
Prevention

Targeting Caddo and Lincoln counties

**OFMQ Role:**

- Improve activities supporting data capture, trending, and reporting for Electronic Clinical Quality Measures (eCQMs) CMS 122 and CMS 165
- Building registry reports in the EHR for Pre-Diabetes patients for the Diabetes Prevention Program (DPP)
- Supporting Electronic transitions of care specifically for DPP
- Providing educational materials and training for staff around program measures and goals
- Advocating the use of Team-Based Care for Diabetes and Hypertension
- Practice facilitation and technical assistance



#### **Current Project Successes:**

- The creation and distribution of new Hypertension and Diabetes educational materials (protocols, magnets, window clings, posters)
- Registry reports created in EHRs for Pre-Diabetes patient tracking
- Diabetes and Hypertension eCQM measure improvements
- Electronic process established in EHRs for Diabetes Prevention Program (DPP) and electronic referrals
- Workflow materials assembled and distributed for electronic referrals for DPP

Check blood pressure a second time after 15 minutes

Inquire if blood pressure improved (<140/90) OR still elevated (>140/90)

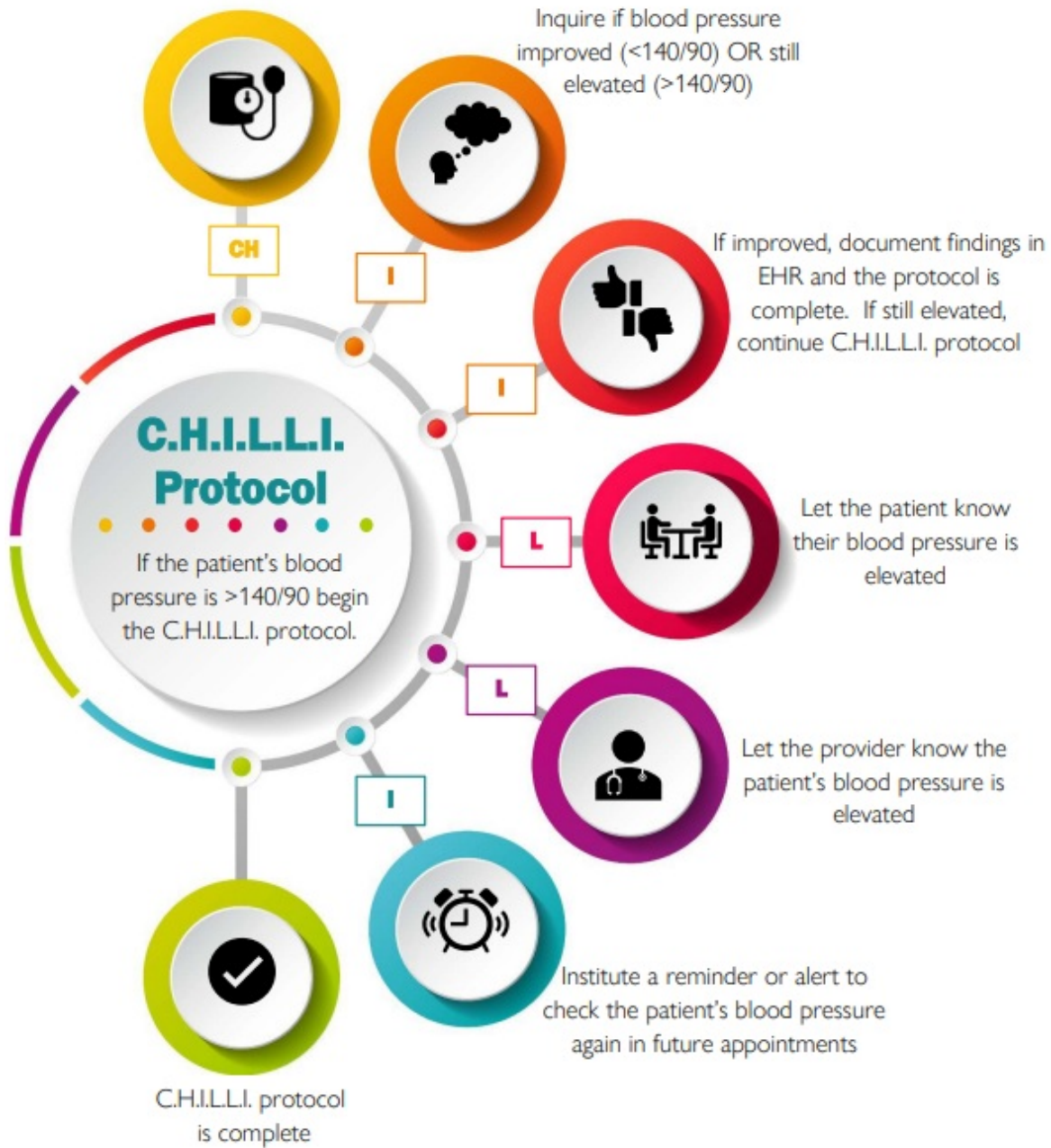
If improved, document findings in EHR and the protocol is complete. If still elevated, continue C.H.I.L.L.I. protocol

Let the patient know their blood pressure is elevated

Let the provider know the patient's blood pressure is elevated

Institute a reminder or alert to check the patient's blood pressure again in future appointments

C.H.I.L.L.I. protocol is complete



## National Health Center Week

August 7-13, 2022

-  SUN Public Health in Housing
-  MON Healthcare for the Homeless
-  TUE Agriculture Worker Health Center
-  WED Patient Appreciation
-  THU Stakeholder Appreciation
-  FRI Health Center Staff Appreciation
-  SAT Children's Health

For more information on the focus days,  
visit the [National Health Center website](#).

988 Available for Indian and Indigenous Country

# Dial 988

from any phone to get help.

If you need immediate help now,  
Text **NATIVE** to 741741.



CRISIS  
TEXT LINE





[THRIVE](#), has partnered with the Indian Health Service, tribes, and tribal organizations across Indian Country to announce the 988 three digit mental health emergency number.

---

## July HIT List:

- CMS Digital Quality Measurement Strategic Roadmap Webinar
  - 8/10 @ [3pm](#)
  - 8/11 @ [12pm](#)
- 2023 Top MIPS [Proposed Changes](#)
- Updated eCQM Data Element Repository (DERep) for [CY2023 Reporting and Performance Periods](#)
- CMS [Enhances Nursing Home Rating System](#) with Staffing & Turnover Data



---

Have Questions or Need Assistance?



Contact Us Today!  
[OFMQHIT@ofmq.com](mailto:OFMQHIT@ofmq.com)  
405-840-2891

Oklahoma Foundation for Medical Quality | 515 Central Park Dr, Suite 101, Oklahoma City, OK  
73105-1724

[Unsubscribe online@ofmq.com](mailto:unsubscribe@ofmq.com)

[Update Profile](#) | [Constant Contact Data  
Notice](#)

Sent by [ofmqhit@ofmq.com](mailto:ofmqhit@ofmq.com) powered by



Try email marketing for free today!